



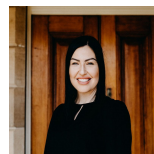
3 Westbourne Avenue THIRLMERE, NSW



Large family home with great living proportions

- Large home with five bedrooms or four plus study
- Grand sunken formal living spaces
- Huge kitchen with separate meals area
- Sunken rumpus room with slow combustion fireplace
- Freshly painted throughout
- Three full bathrooms
- Quiet rural location
- Close to school, shops and cafes

For more details please visit
<https://staging.gyproperty.com.au/5341243>



Danielle Reynolds

0402 386 410