



13 Rosina Avenue Harrington Park, NSW

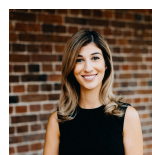
5 2 2

## Large family home with swimming pool

Set in a peaceful locale, this generous dual level home is spread over an impressive 624sqm block. With a family friendly layout consisting of both formal and casual areas, this home is tastefully presented with neutral colour tones. Embraced by light filled interiors offering a residence of enormous and serene appeal.

- Stunning granite kitchen with 900mm gas oven and walk in pantry
- Four large bedrooms upstairs with a fifth bedroom downstairs
- Deluxe master suite with walk in robe and twin shower ensuite
- Media room completed with projector and wide screen
- Broad selection of formal and casual living
- Remote double garage, with drive through access
- Oversized covered alfresco area for year round entertaining
- Sparkling in ground fresh water solar heated swimming pool
- Well positioned in a family friendly location

For more details please visit  
<https://staging.gyproperty.com.au/5363758>



**Joanna Younan**

0438 829 790



**Anna Younan**

0416 053 838



GROUND FLOOR



FIRST FLOOR

