



93 Junction Road Ruse, NSW



Perfect first home and investment opportunity

93 Junction Road, Ruse is a ready made prospect for first home buyers or a savvy investor. Recently renovated with a fresh coat of paint and brand new carpet, this is the hidden gem you've been looking for. Situated only minutes from local primary school and high school, it also has a supermarket close by and plenty of surrounding reserves for owners to enjoy.

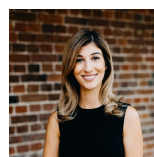
- Open plan living in a single storey layout
- Plenty of natural light
- Four comfortable sized bedrooms
- Built in robes in three bedrooms
- A bathroom with separate toilet
- New carpet in living areas and bedrooms
- Tiles in kitchen and meals area
- Freshly painted
- 560m2 block
- Minutes from Ruse Public School and Leumeah

For more details please visit

staging.gyproperty.com.au

PH: 02 4648 4058 | FAX: 02 4648 4059

2/6 Somerset Avenue, NARELLAN, NSW 2567



Joanna Younan

0438 829 790



Anna Younan

0416 053 838

