



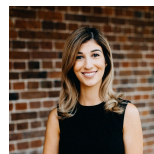
12 Bedervale Court Wattle Grove, NSW 3 2 1

Low maintenance living

Creating exciting appeal for families, first home buyers and investors alike, this immaculately presented three bedrooms home offers low maintenance living at its finest. Positioned in a quiet cul-de-sac with quick access to the M5 and M7 motorways.

- Open living/dining spaces with access to private court yard
- Three good size bedrooms, each featuring built-in wardrobes
- Main bathroom with three-way design for functionality
- Master bedroom with ensuite, courtyard access and ceiling fan
- Central kitchen with dishwasher, gas cooking and meal area
- Ducted air conditioning, natural gas, abundance of natural light
- Large covered entertaining with child friendly yard
- Secure single lock-up garage with additional driveway parking
- Walking distance to Wattle Grove Shopping Village
- Close proximity to public transport, schools and parklands

For more details please visit <https://staging.gyproperty.com.au/5363925>



Joanna Younan
0438 829 790



Anna Younan
0416 053 838



Scale in metres. Indicative only. All information contained herein is obtained from sources we believe to be accurate. We cannot guarantee its accuracy. Interested persons should make and rely on their own enquiries

