



43 Benwerrin Crescent Grasmere, NSW



Luxury living in Camden country

Set in one of Camden's most enviable locations, this spectacular five-bedroom home combines Camden's country living with space and size. An outstanding home of exceptional quality situated on a superb 4023sqm parcel of land.

- Picturesque facade with landscaped gardens
- Five incredible bedrooms including a master suite
- Spacious bathrooms with stylish craftsmanship
- Modern kitchen with an abundance of natural light
- Intuitive floor plan allows for a carefree lifestyle
- Sparkling in-ground pool surrounded by tranquil gardens
- Immaculately presented with a superior attention to detail
- Impressive flow for seamless indoor/outdoor entertaining
- Expansive outdoor entertaining with stunning views
- Moments to shopping, schools, parks and walking trails

For more details please visit
<https://staging.gyproperty.com.au/5364241>

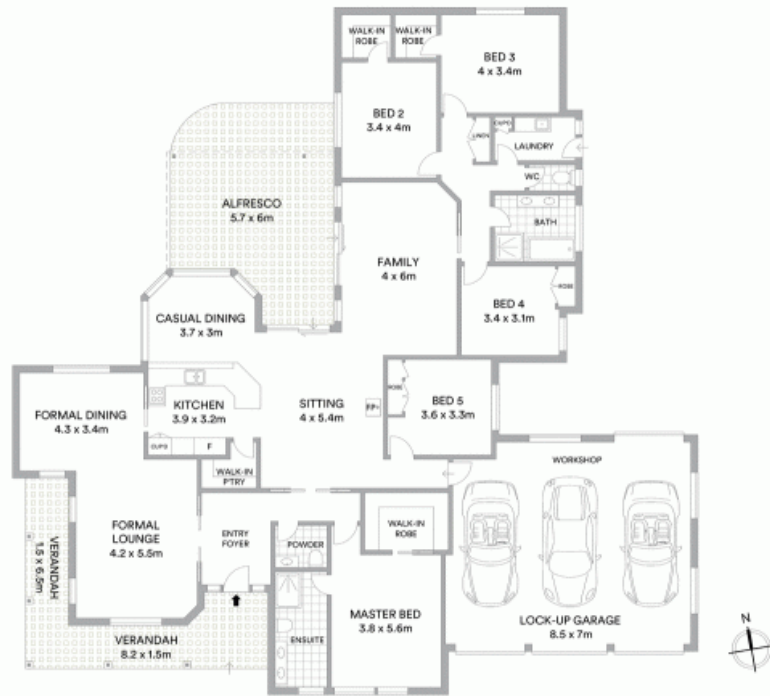


Anna Younan

0416 053 838



Benwerrin Crescent



Internal 301sqm
Land area 4,025sqm

McGrath

Scale in metres. Indicative only. All information contained herein is obtained from sources we believe to be accurate. We cannot guarantee its accuracy. Interested persons should make and rely on their own enquiries

