



28 Ayres Crescent Leumeah, NSW



## Grand family home with endless space

An outstanding family home or investment opportunity, this stunning five-bedroom residence is brimming with space and size to appease growing families. A versatile home of exceptional quality set on an outstanding 847sqm parcel of land.

- Stunning and prominent residence with beautiful appeal
- Abundance of space ensures care free living
- Five bedrooms with a master retreat and balcony
- Open plan kitchen with quality appliances
- Superb designated living and dining areas
- Family bathroom with separate toilet
- Study with backyard views as well as balcony
- Covered outdoor entertaining with side access to backyard
- 847sqm block of land ensure granny-flat potential (STCA)
- Moments to shopping, schools, parks and walking trails

For more details please visit  
<https://staging.gyproperty.com.au/5364243>



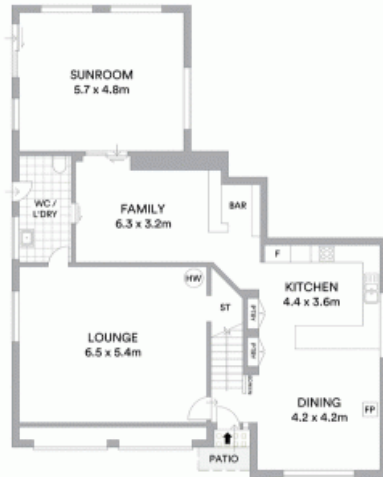
**Anna Younan**

0416 053 838



**Anna Younan**

0416 053 838



GROUND LEVEL



UPPER LEVEL



Ayres Crescent



**McGrath**

Scale in metres. Indicative only. All information contained herein is obtained from sources we believe to be accurate. We cannot guarantee its accuracy. Interested persons should make and rely on their own enquiries

