



112 Emerald Drive Eagle Vale, NSW



## Fantastic Family home in a great location

This immaculate gem is perfectly located in the heart of Eagle Vale and delivering space for the growing family. With a statement in style and sophistication this impressive home offers easy care living.

- Well presented home positioned on 600sqm
- Four good sized bedrooms with built in robes to three
- Spacious kitchen with quality appliances
- Family bathroom and ensuite to the master
- Multiple formal and informal living options
- Upstairs lounge area close to bedrooms
- Additional carport with drive through access to backyard
- Covered outdoor entertaining area
- Generously sized private yard with grassed area and shed
- Ideally located close to schools, shops and transport

For more details please visit

<https://staging.gyproperty.com.au/5364247>



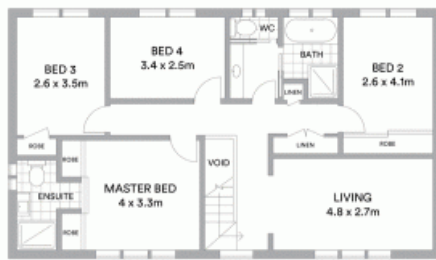
**Anna Younan**

0416 053 838

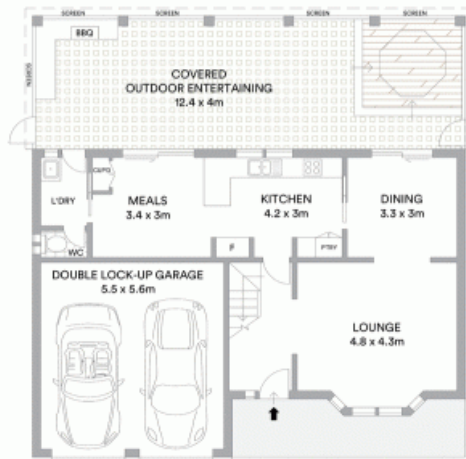


**Luke Mannion**

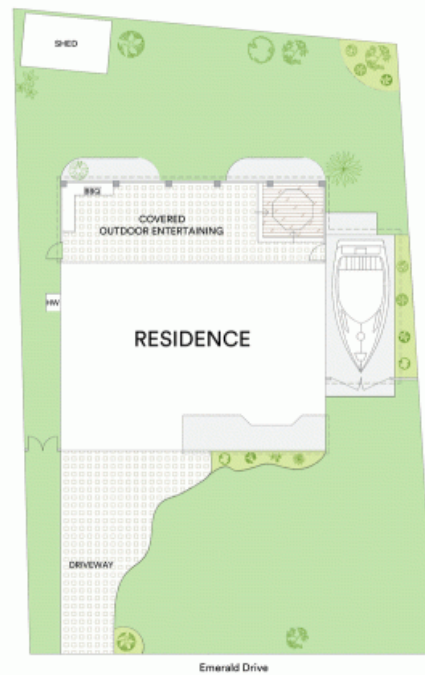
0428 473 629



FIRST FLOOR



GROUND FLOOR



Emerald Drive



**McGrath**

Scale in metres. Indicative only. All information contained herein is obtained from sources we believe to be accurate. We cannot guarantee its accuracy. Interested persons should make and rely on their own enquiries