



23 The Watermark Mount Annan, NSW

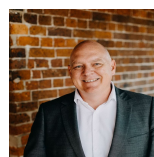


## Immaculately presented with endless space

Perfectly positioned within The Cascades Estate, this well-loved family home is sure to impress. The endless space within this exceptional Clarendon build creates a balance of indoor and outdoor entertainment. All while being located close distance to M5.

- Immaculate presentation with outstanding street appeal
- Four spacious bedrooms with an oversized master suite
- Open plan kitchen fitted with a gas cooktop
- Superb designated living and dining areas
- Sun soaked meals area with grand bay windows
- Spacious family bathroom with separate powder room
- Designated study, ducted air, brand new gas hot water system
- Outdoor entertaining with beautiful manicured gardens
- Double remote garage with single drive through car access
- Moments to shopping, schools, parks and walking trails

For more details please visit  
<https://staging.gyproperty.com.au/5364251>



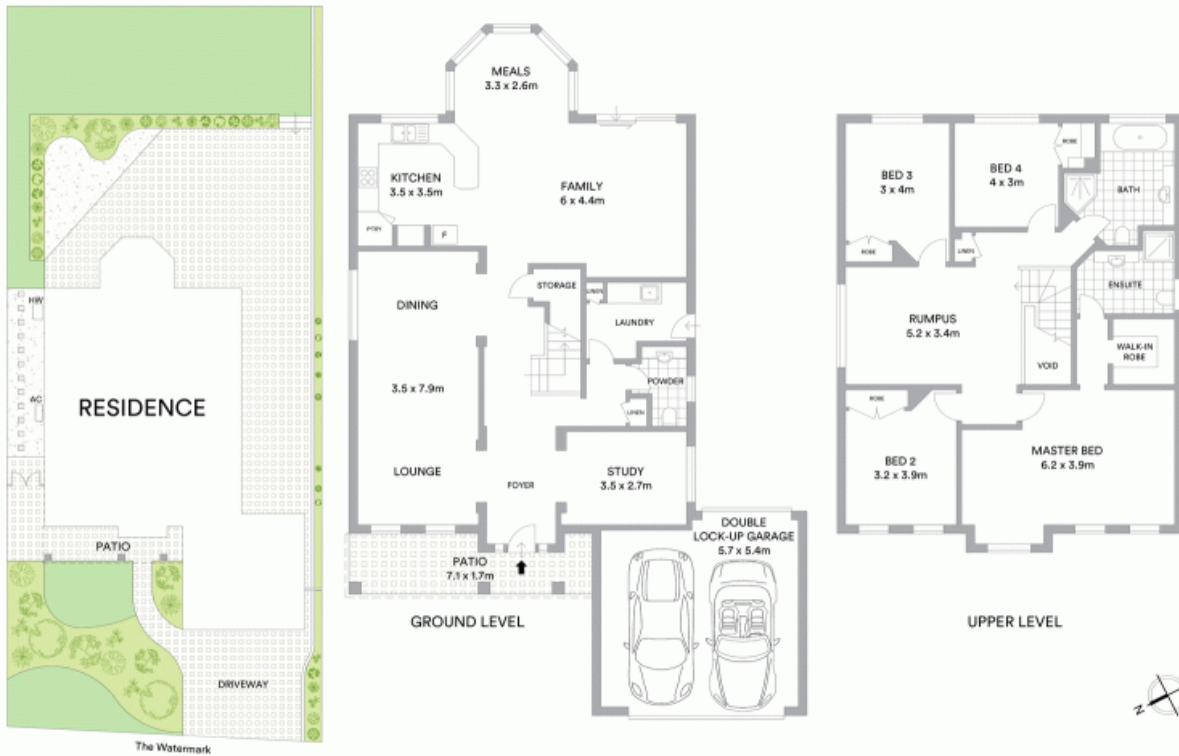
**Luke Mannion**

0428 473 629



**Anna Younan**

0416 053 838



McGrath

