



8 Douglas Place Harrington Park, NSW

5 3 2

Newly completed 37 square home on 717sqm block

Nestled on a prime 717sqm parcel in a quiet cul-de-sac location of the Wildfire precinct of Harrington Grove estate is this grand, sun soaked residence. Featuring master suites on both levels and an abundance of upgrades throughout, spanning across 37 squares of internal living, this newly completed home is the epitome of family living with all the conveniences of Harrington Grove and its facilities.

- Full guest bedroom downstairs with chic ensuite and walk in robe
- Grand master bedroom boasts deluxe ensuite and mirrored robes
- Contemporary kitchen with stainless appliances and walk-in pantry
- Spacious cinema room with built-in speakers and sound proofing
- Stained maple staircase with glass balustrade, upstairs rumpus room
- Open plan living and dining room lead to alfresco with ceiling fans
- Ducted air, ducted vacuum, alarm with pet sensors, video intercom
- Double remote garage with internal access, off street parking
- Fully fenced, child-friendly yard
- Close to shops, scenic parklands and Harrin

For more details please visit

staging.gyproperty.com.au

PH: 02 4648 4058 | FAX: 02 4648 4059

2/6 Somerset Avenue, NARELLAN, NSW 2567



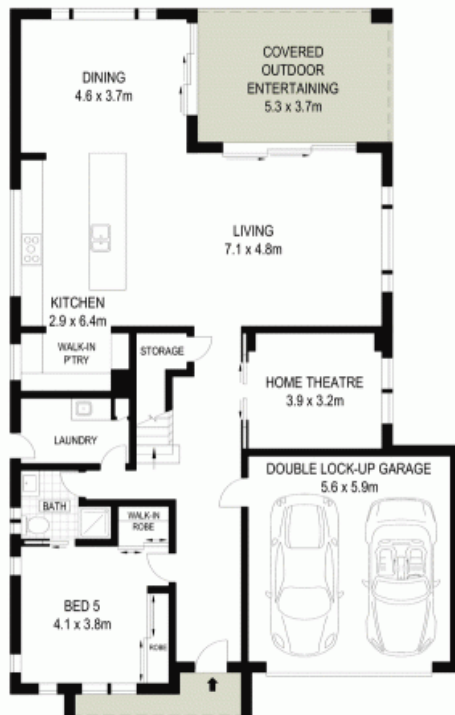
Luke Mannion

0428 473 629



Luke Mannion

0428 473 629



GROUND FLOOR



FIRST FLOOR



McGrath

Scale in metres. Indicative only. Dimensions are approximate. All information contained herein is gathered from sources we believe to be reliable. However we cannot guarantee its accuracy and interested persons should rely on their own enquiries

