



6 Mountain View Avenue Glen Alpine, NSW

5 2 2

Immaculate home with mountain views in ideal locale

Boasting a choice of spacious living zones, this immaculately maintained dual level home enjoys a north facing elevated position with views across the Blue Mountains. It's ideally located close to Macarthur Square Shopping Centre with easy access to the M5.

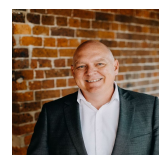
- Sunken formal lounge and dining room for relaxed family living
- Spacious rumpus room and casual meals area with timber floors
- All-weather entertaining patio overlooks child-friendly yard
- Stone gas kitchen has stainless appliances and breakfast bar
- Large master suite features walk-in robe and balcony access
- Well scaled bedrooms with built-in robes and fans, study
- Family sized main bathroom with floor-to-ceiling tiles, w/c
- Ducted vacuum and air conditioning, internal laundry, storage
- Double garage with internal access, parking for boat/caravan
- Close to a choice of schools and Western Sydney University

For more details please visit
<https://staging.gyproperty.com.au/5367506>



Luke Mannion

0428 473 629

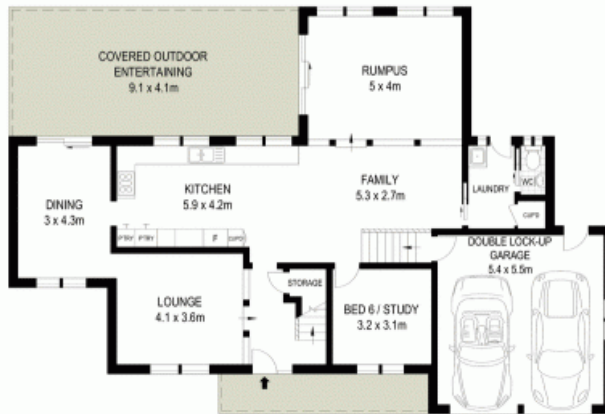


Luke Mannion

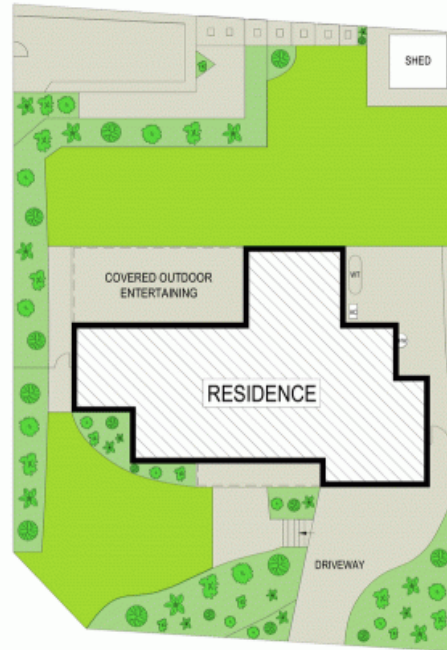
0428 473 629



FIRST FLOOR



GROUND FLOOR



McGrath

Scale in metres. Indicative only. Dimensions are approximate. All information contained herein is gathered from sources we believe to be reliable. However we cannot guarantee its accuracy and interested persons should rely on their own enquiries

