



13 Matthew Close Mount Annan, NSW

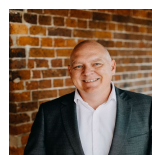


Family home with separate granny flat

Ideally positioned in a quiet pocket with leafy surrounds. This four bedroom with a studio, spacious family home offers multiple living areas that flow outdoors with ease. Conveniently placed within minutes to buses, schools and shops.

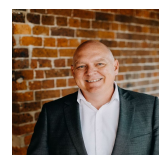
- Northerly aspect with elevated views
- Four bedrooms with built-in storage to all
- Ensuite and walk-in robe to master bedroom
- Granny flat with kitchenette and air conditioning
- Versatile floorplan to accommodate family living
- Central kitchen with ample storage and gas appliances
- Light filled living and dining space extends outdoors
- Neutral colour palette, ready to occupy now
- Fully fenced low maintenance yard, garden shed
- Popular family location within easy access to all amenities

For more details please visit
<https://staging.gyproperty.com.au/5367587>



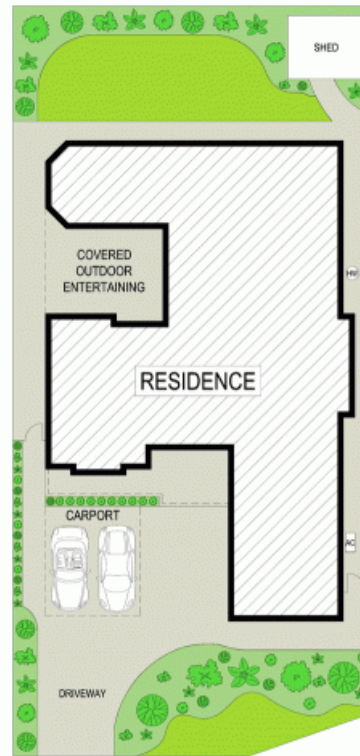
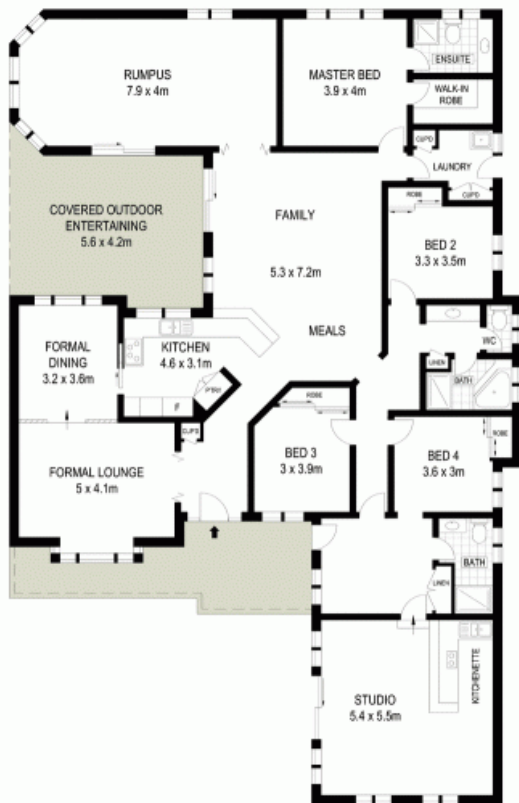
Luke Mannion

0428 473 629



Luke Mannion

0428 473 629



McGrath

Scale in metres. Indicative only. Dimensions are approximate. All information contained herein is gathered from sources we believe to be reliable. However we cannot guarantee its accuracy and interested persons should rely on their own enquiries

