



2 Hannah Place Mount Annan, NSW



Situated on an elevated 913sqm block

Defined by its modest proportions and generous parcel of land, this superb residence provides an idyllic family home in a prime location. Peacefully set on an elevated 913sqm parcel in a quiet cul-de-sac and positioned within easy access to schools, buses and shopping.

- Layout provides all the ease of a single level design
- Three bedrooms with built-in robes, ensuite to master
- Separate lounge, dining and family rooms
- Tastefully updated kitchen with stainless steel appliances
- Air conditioning, natural gas and security alarm
- Double garage with additional side access for boat/ caravan
- Spacious covered entertaining deck overlooking rear yard
- Large, private rear yard with gazebo and room for the kids
- Blank canvas under the home to add additional rooms
- Boasting impressive views of the district

For more details please visit <https://staging.gyproperty.com.au/5367677>



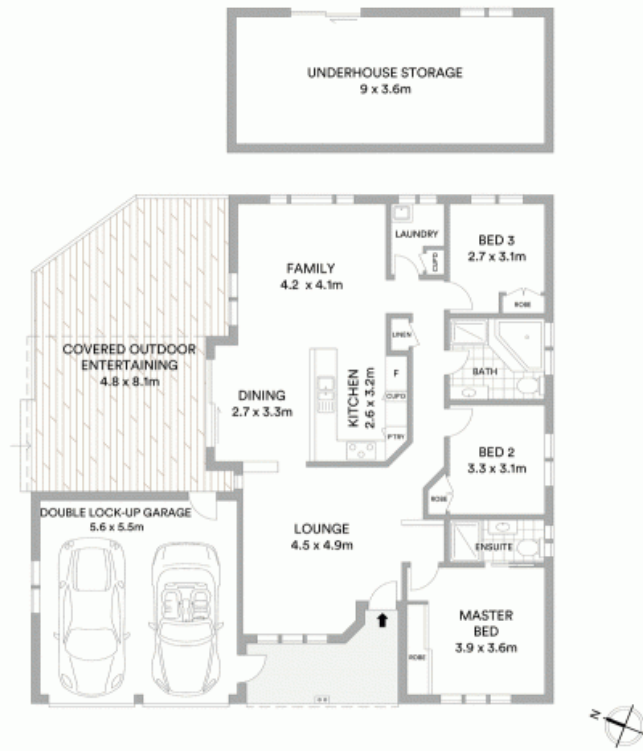
Luke Mannion

0428 473 629



Luke Mannion

0428 473 629



McGrath

Scale in metres. Indicative only. All information contained herein is obtained from sources we believe to be accurate. We cannot guarantee its accuracy. Interested persons should make and rely on their own enquiries

