



10 Willmington Loop Oran Park, NSW



Contemporary interiors with quality finishes

Showcasing a timeless contemporary aesthetic across a level parcel of land, this spacious family home reveals a superb selection of interior living spaces. Greeted by an attractive facade, the generous floorplan extends effortlessly onto a vast yard with abundant sunlight.

- Seamless custom design with stylish living/dining areas
- Four large bedrooms, three with built-in wardrobes
- Master bedroom has chic ensuite and walk-in wardrobe
- Contemporary kitchen with stainless appliances and walk-in pantry
- Exquisite bathrooms, ducted air conditioning
- All-weather outdoor entertaining area spills onto level lawn
- Double lock-up garage with internal access and storage space
- Fully fenced yard with low maintenance landscaping
- Nestled in a quiet street footsteps to Grand Prix playground
- Close to quality schools, local shops and Leppington Station



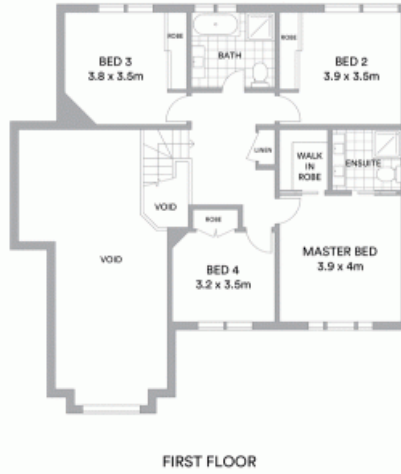
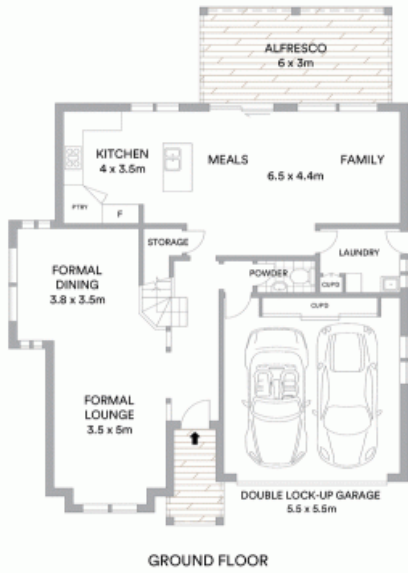
Anna Younan

0416 053 838



Anna Younan

0416 053 838



McGrath

Scale in metres. Indicative only. All information contained herein is obtained from sources we believe to be accurate. We cannot guarantee its accuracy. Interested persons should make and rely on their own enquiries

