



32 Morton Terrace Harrington Park, NSW



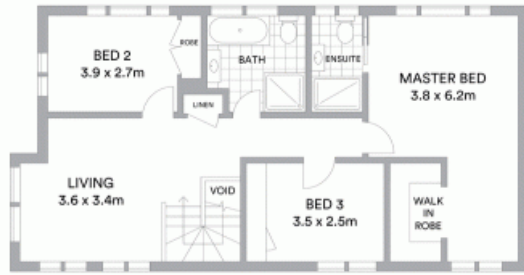
Brimming with character, elegance and style

Presenting stylish street appeal, effortlessly flowing living spaces and spacious interiors. This homely residence is crafted to embrace the ever green surroundings of Harrington Park, footsteps away from the local plaza, schools and public transport.

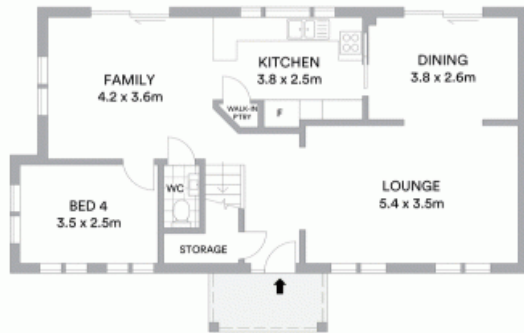
- Grand facade nestled among the luscious local environment
- Set on a generous 540sqm parcel of land
- Four bedrooms, master equipped with walk-in robe and ensuite
- Sunlit lounge setting overlooks the peaceful front yard
- Kitchen area flows perfectly into the open formal dining
- Upstairs area provides a comfortable lounge setting
- Extras include ducted air con and video security system
- Large detached double garage with gate side access
- Low maintenance yard with the perfect amount of privacy
- Walking distance to all local amenities, schools and transport

For more details please visit
<https://staging.gyproperty.com.au/5377709>

Gilbert + Younan Sales



FIRST FLOOR



GROUND FLOOR



McGrath

Scale in metres. Indicative only. All information contained herein is obtained from sources we believe to be accurate. We cannot guarantee its accuracy. Interested persons should make and rely on their own enquiries

