



7 Granite Place Eagle Vale, NSW

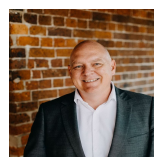
5 3 2

Convenient location

Generously proportioned, and boasting a selection of spacious living zones, this much-loved family home has been meticulously maintained and offers outstanding lifestyle options. Occupying a 604sqm parcel this home is conveniently located within minutes to shops, schools and transport.

- Boasting a selection of spacious casual and formal living areas
- Large master suite enjoys walk-in robe and ensuite
- Well scaled bedrooms are all complete with built-in wardrobes
- Ample sized kitchen with plenty of storage
- Covered alfresco entertaining area
- Convenient corner block position
- Double lock-up garage
- Conveniently positioned split system air conditioning and gas
- Close proximity to schools, shops and transport
- Easy access to the M5 motorway and Campbelltown CBD

For more details please visit <https://staging.gyproperty.com.au/5377764>



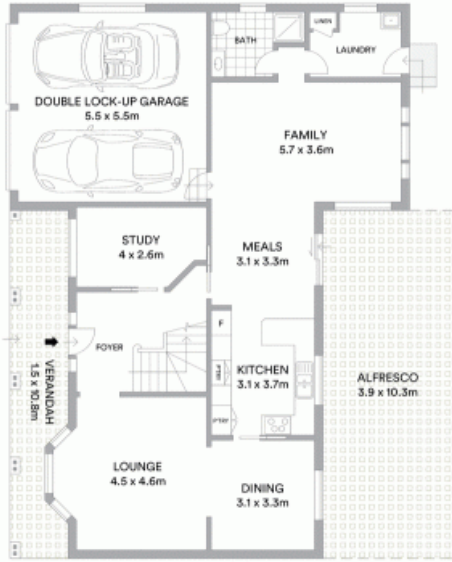
Luke Mannion

0428 473 629



Luke Mannion

0428 473 629



GROUND LEVEL



UPPER LEVEL



Granite Place



McGrath

Scale in metres. Indicative only. All information contained herein is obtained from sources we believe to be accurate. We cannot guarantee its accuracy. Interested persons should make and rely on their own enquiries

