



14 Peregrine Street Gledswood Hills, NSW

4 2 2

Expertly designed and crafted

Ideally located within the Hermitage Estate, this beautiful residence is the epitome of open plan living. Defined by its contemporary design and sophisticated layout, this home truly showcases five-star family living close to all amenities.

- Four generous bedrooms all with personal storage
- Master retreat with walk-in robe, ensuite
- Formal lounge and dining areas, neutral colour palette
- Modern entertainer's kitchen with gas cooking and walk-in pantry
- Security alarm, ducted air and Opticom internet
- Remote control double garage with internal access
- Indoors flow seamlessly to the covered outdoor entertaining area
- Picturesque easy care gardens with fully fenced yard
- Prestige address surrounded by quality homes
- Close proximity to parks, cycleways and Country Club

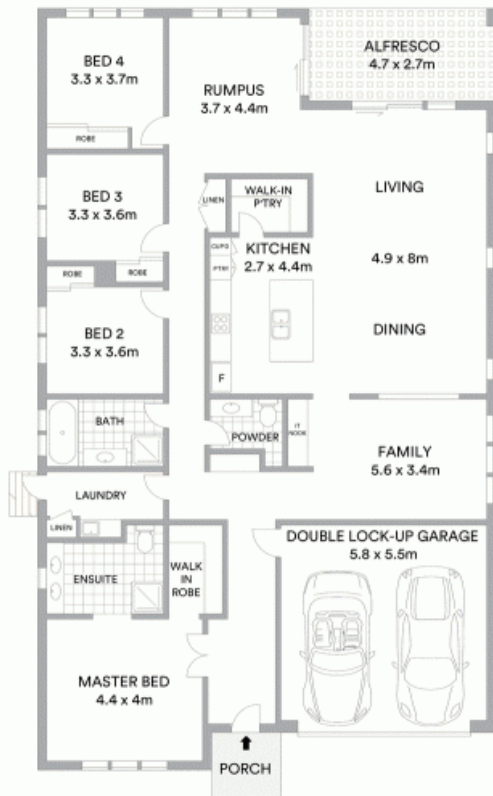
For more details please visit
<https://staging.gyproperty.com.au/5377813>



Anna Younan
0416 053 838



Anna Younan
0416 053 838



McGrath

Scale in metres. Indicative only. All information contained herein is obtained from sources we believe to be accurate. We cannot guarantee its accuracy. Interested persons should make and rely on their own enquiries

