



234 The Parkway Bradbury, NSW



Immaculate Presentation

This stunning home delivers exquisite presentation, high end finishes and quality inclusions throughout. Offering an open floorplan, that flows seamlessly from inside to out, making this the perfect entertainer.

- Stunning street appeal and immaculate presentation
- Three generous size bedrooms with built-in wardrobes
- Spacious central kitchen with quality appliances
- Separate formal and casual living spaces
- Impressive 626sqm parcel with manicured gardens
- Ducted air conditioning, downlights and fireplace
- Oversized pergola with additional lock-up workshop
- Tandem garaging with plenty of storage
- Perfect for first home buyers or astute investors
- Ideally located close to schools, shops and public transport

For more details please visit

<https://staging.gyproperty.com.au/5377816>



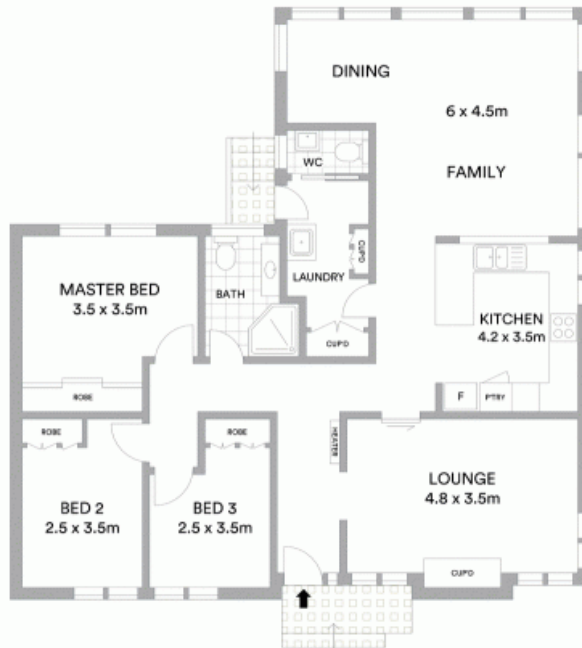
Anna Younan

0416 053 838



Anna Younan

0416 053 838



The Parkway

McGrath

Scale in metres. Indicative only. All information contained herein is obtained from sources we believe to be accurate. We cannot guarantee its accuracy. Interested persons should make and rely on their own enquiries.

