



6 Maize Avenue Spring Farm, NSW

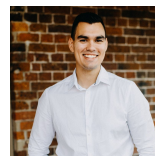
4 2 2

Stunning modern family home

Positioned upon a 461sqm parcel of land, this immaculately presented four bedroom home offers low maintenance living at its finest. Boasting practical living whilst instilling a sense of comfort and privacy, further enhanced by its central location.

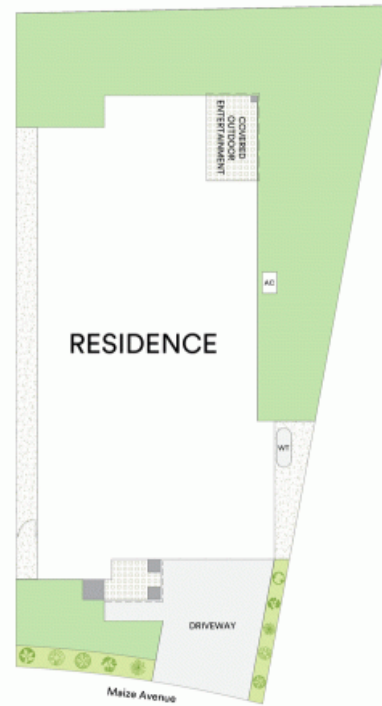
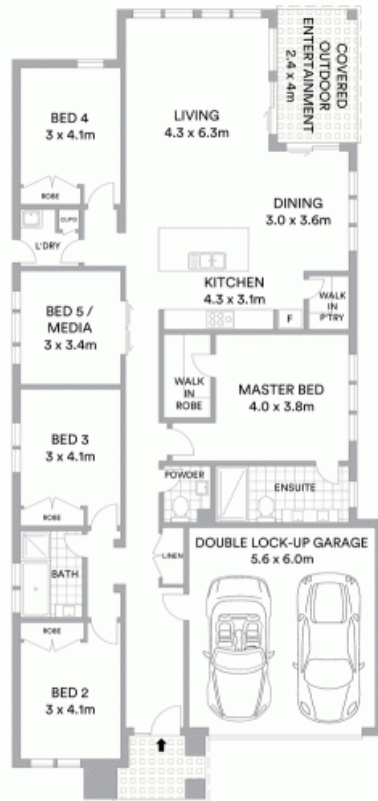
- Single level home in a perfect location
- Modern kitchen presents walk-in pantry and stainless appliances
- Four spacious bedrooms all with built-in robes
- Master bedroom hosts private ensuite and walk-in robe
- Additional media room enclosed by sliding doors
- Central main bathroom as well as separate powder room
- Outdoor alfresco, ducted air conditioning and tiled throughout
- Spacious open floor plan with plenty of natural light
- Automatic double lock-up garage offers handy internal access
- Only a few minutes from shopping, schools and parklands

For more details please visit <https://staging.gyproperty.com.au/5575971>



Michael Kay

0432 976 070



McGrath

Scale in metres. Indicative only. All information contained herein is obtained from sources we believe to be accurate. We cannot guarantee its accuracy. Interested persons should make and rely on their own enquiries

