



Indicative Property Only



3 Bilson Road Spring Farm, NSW



Brand new home due to be completed soon

Brand new construction by Instyle Homes, 'The Thomas' is scheduled for completion in September 2017. Spread over 21 squares and constructed with critical assessment, 'The Thomas' is an ideal mix of contemporary design with easy-care living.

- Superior design with tasteful finishes
- Generous master bedroom boasts an ensuite and walk-in robe
- Well scaled bedrooms are fitted with built-in wardrobes
- Open plan family and dining flow seamlessly outdoors
- Media room, NBN and natural gas
- Low maintenance living, neutral colour palette
- Contemporary style architraves and skirting boards
- Covered alfresco entertaining overlooks child-friendly yard
- Double automatic garage with internal access
- Close proximity to schools, shops and public transport

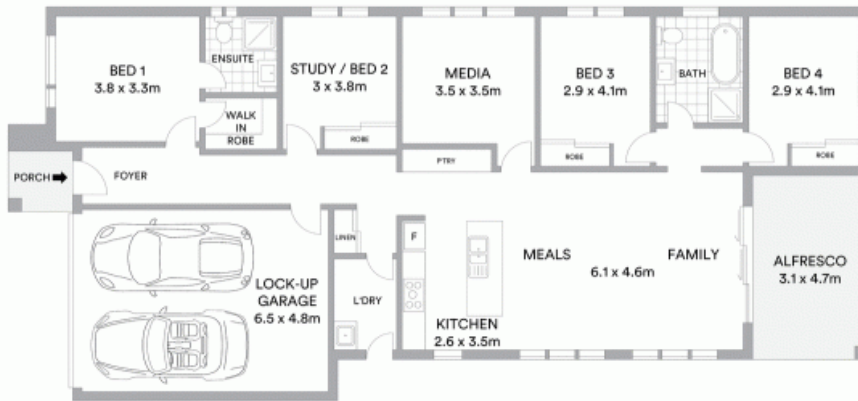
For more details please visit <https://staging.gyproperty.com.au/5577220>



Anna Younan
0416 053 838



Anna Younan
0416 053 838



McGrath

Scale in metres. Indicative only. All information contained herein is obtained from sources we believe to be accurate. We cannot guarantee its accuracy. Interested persons should make and rely on their own enquiries

