



30 Phyllis Street Minto, NSW

6 2 2

Neat six bedroom home

This neat six bedroom home is nestled in a quiet area and full of potential and R3 medium density residential. Freshly tiled throughout, covered entertaining area and in-ground swimming pool. Located walking distance to Minto railway station.

- Large kitchen with ample storage and stainless appliances
- Spacious living area with ambient natural light
- Huge rumpus room leads directly outdoors
- Updated main bathroom with separate shower and spa bath
- Internal laundry, plantation shutters
- Beautiful sun drenched front yard
- Double remote garage with internal access
- Fully fenced yard with swimming pool and garden shed
- Family friendly location close to Minto Mall and railway station
- An ideal opportunity for first home owners or investors

For more details please visit <https://staging.gyproperty.com.au/5577279>



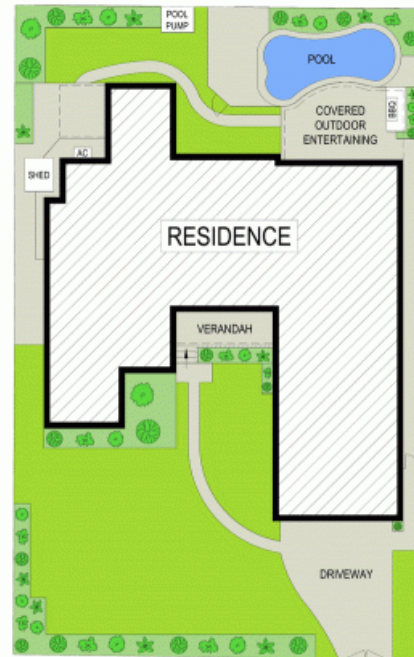
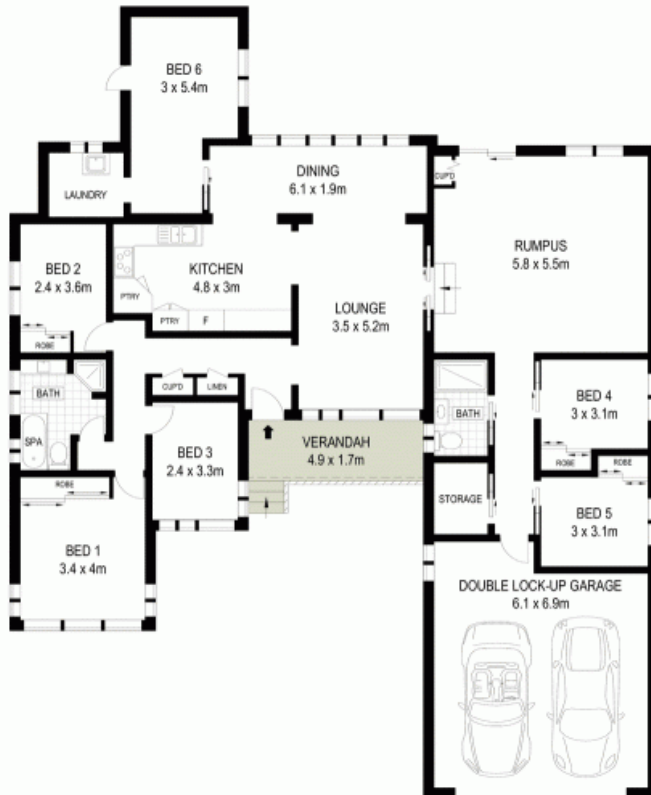
Luke Mannion

0428 473 629



Luke Mannion

0428 473 629



McGrath

Scale in metres. Indicative only. Dimensions are approximate. All information contained herein is gathered from sources we believe to be reliable. However we cannot guarantee its accuracy and interested persons should rely on their own enquiries

