



12 Chain-O-Ponds Circuit Mount Annan, NSW



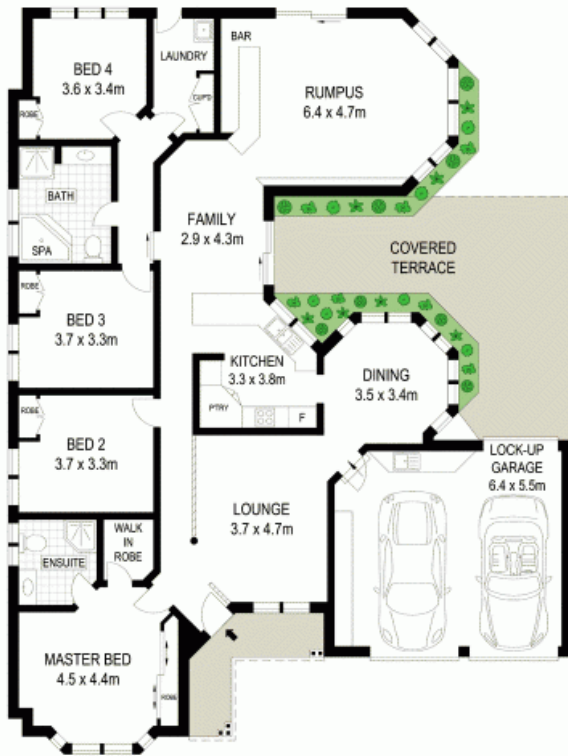
### Four bedroom home on huge 969sqm block

Proudly perched on 969sqm block in Mount Annan's exclusive estate, The Cascades. This spacious four bedroom home presents with a combination of well-appointed living spaces and a massive yard making this the ideal family home.

- Master suite with an ensuite and both built-in and walk-in robes
- Generous sized carpeted bedrooms all with built-in robe
- Large pine kitchen with 600mm gas and electric stainless appliances
- Oversized entertainers rumpus room with built-in bar
- Federation style large bathroom with built-in spa
- Alarm, three zoned ducted air conditioning, halogen downlights
- Combination of timber look flooring, tiles and carpet throughout
- Covered entertaining space overlooks sparkling solar-heated pool
- Massive rear yard with separate pavilion and a reserve at the rear
- Double garage with remote, ample storage, internal and rear access

For more details please visit  
<https://staging.gyproperty.com.au/5577314>

Gilbert + Younan Sales



SITE PLAN (NOT TO SCALE)



0 1 2 3 4 5

Scale in metres. Indicative only. Dimensions are approximate. All information contained herein is gathered from sources we believe to be reliable. However we cannot guarantee its accuracy and interested persons should rely on their own enquiries.

12 Chain-O-Ponds Circuit, Mount Annan

**McGrath**

