



28 Greenfield Crescent Elderslie, NSW



Immaculately kept home with a great street appeal

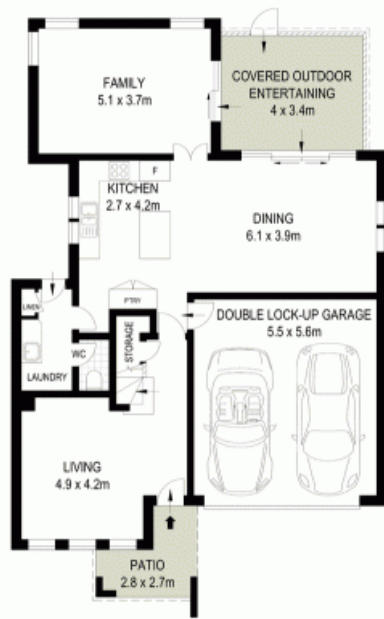
Proudly situated in the ever popular Ridges Estate in Elderslie, this immaculate four bedroom home combines light filled living interiors with an appealing layout. With comfortable living in mind, there is nothing to do but move in.

- Four spacious bedrooms, master featuring walk-in robe and ensuite
- Kitchen featuring 20mm stone benchtop, gas cooktop and dishwasher
- Light filled living spaces, living room featuring fireplace
- Separate kids retreat and balcony upstairs
- Well appointed main bathroom and a separate toilet downstairs
- Ducted air conditioning throughout, two slimline water tanks
- Expansive back yard offering plenty of potential
- Generous alfresco area perfect for outdoor entertaining
- Remote double lock-up garage with internal access
- Perfectly positioned close to schools, shops and public transport

For more details please visit

<https://staging.gyproperty.com.au/5577328>

Gilbert + Younan Sales



GROUND FLOOR



UPPER FLOOR



McGrath

Scale in metres. Indicative only. Dimensions are approximate. All information contained herein is gathered from sources we believe to be reliable. However we cannot guarantee its accuracy and interested persons should rely on their own enquiries

28 Greenfield Crescent, Elderslie, NSW

