



2 Crase Place Grasmere, NSW



Grand contemporary family home on 3,040sqm block

The ultimate in contemporary design on a grand scale is this master built family home. Nestled on an elevated parcel of 3,040sqm in a quiet cul-de-sac. Dappled with natural light and showcasing a selection of expansive living areas that lead out to a covered alfresco and stunning solar heated swimming pool.

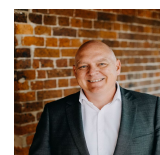
- Five double sized bedrooms with personal storage to all
- Spacious master retreat with walk-in robe and ensuite
- Gourmet stone kitchen, walk-in pantry and integrated appliances
- Generous flowing layout, built-in home office, upstairs rumpus
- Fully equipped nine seater cinema, separate games room
- Open plan living and dining lead through bi-fold doors
- Stunning solar heated salt water pool, covered alfresco
- Ducted air, plantation shutters and video security
- Generous four car remote garage, abundant storage

For more details please visit
<https://staging.gyproperty.com.au/5577363>



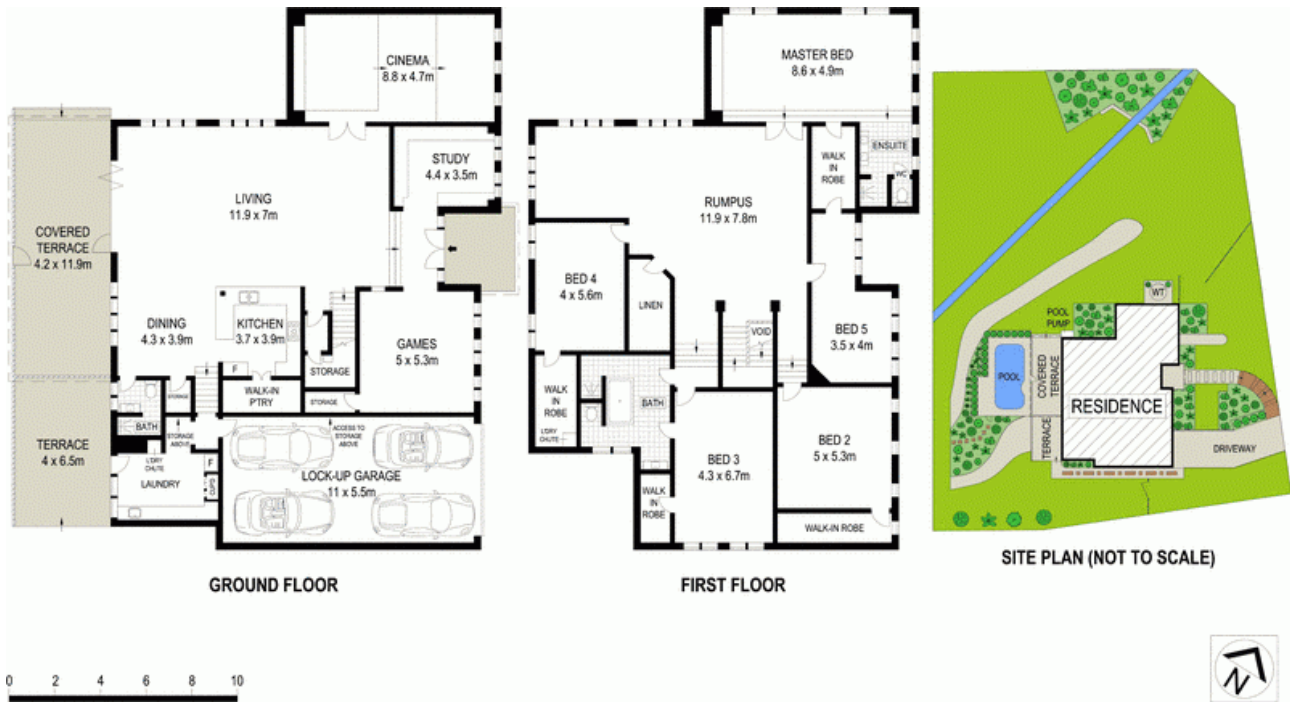
Luke Mannion

0428 473 629



Luke Mannion

0428 473 629



2 Crase Place, Grasmere

McGrath

