



15 Sorell Way Harrington Park, NSW

🚗 4 🏠 4 🚗 3

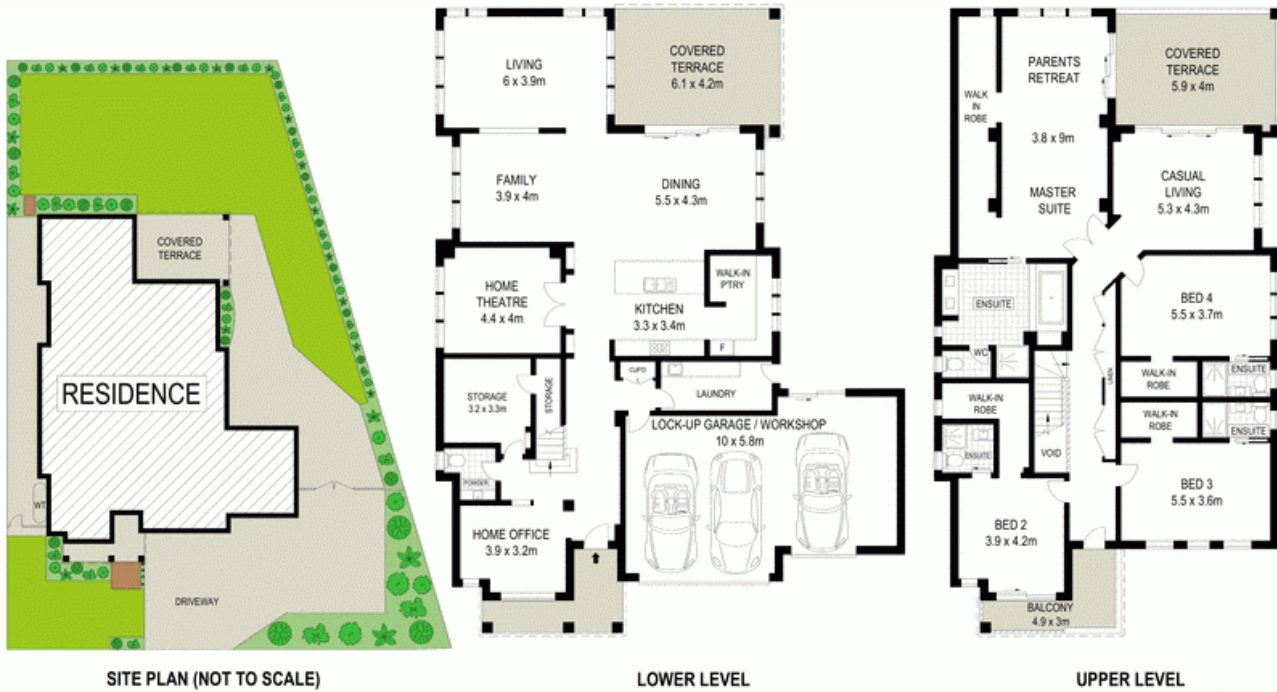
Luxurious home on 928sqm block

Proudly situated on a 928sqm elevated block with views to the mountains spreading over 58.5 squares, this luxurious home presents an abundance of natural light. The expansive living areas, extravagant outdoor entertaining areas and well-crafted fixtures make this a superlative home.

- Stunning kitchen with 40mm stone benchtops and waterfall edge
- European 900mm appliances, walk-in pantry, soft close draws
- Master suite with walk-in robe, ensuite, parents retreat and balcony
- All bedrooms feature a generous walk-in robe and ensuite
- Floor to ceiling tiles in all bathrooms, two gas hot water systems
- Dual roller blinds, three zone ducted air and alarm system
- LED downlights throughout downstairs, plush carpet
- Plantation shutters, four natural gas points spread throughout
- Triple remote control garage with large drive through side access
- Ample off street parking suitable for multiple vehicles/boat

For more details please visit <https://staging.gyproperty.com.au/5577375>

Gilbert + Younan Sales



SITE PLAN (NOT TO SCALE)

LOWER LEVEL

UPPER LEVEL



Scale in metres. Indicative only. Dimensions are approximate. All information contained herein is gathered from sources we believe to be reliable. However we cannot guarantee its accuracy and interested persons should rely on their own enquiries.



15 Sorell Way, Harrington Park

McGrath

