



6 Molle Place Narellan Vale, NSW



Single level home on 701sqm block

Right in the heart of Narellan Vale is this beautiful single level home. Boasting four bedrooms, three living areas all looking onto a huge outdoor pergola surrounded by beautiful gardens. This home is perfect for families, downsizers or the astute investor.

- Four bedrooms with floating wood floors and built-in robes to three
- Large separate rumpus/lounge rooms
- Formal entry and sitting room overlooking outdoor entertaining area
- Good sized laundry with cupboards and side access
- Ducted air conditioning throughout
- Kitchen with a large pantry adjoining dining and living area
- Solar water and 1.52kw solar electric panels on the roof
- Lovely front and back gardens enhance this relaxed home
- Double undercover car spaces with two good size sheds
- Quiet cul-de-sac, walking distance to primary and secondary schools

For more details please visit
<https://staging.gyproperty.com.au/5577415>

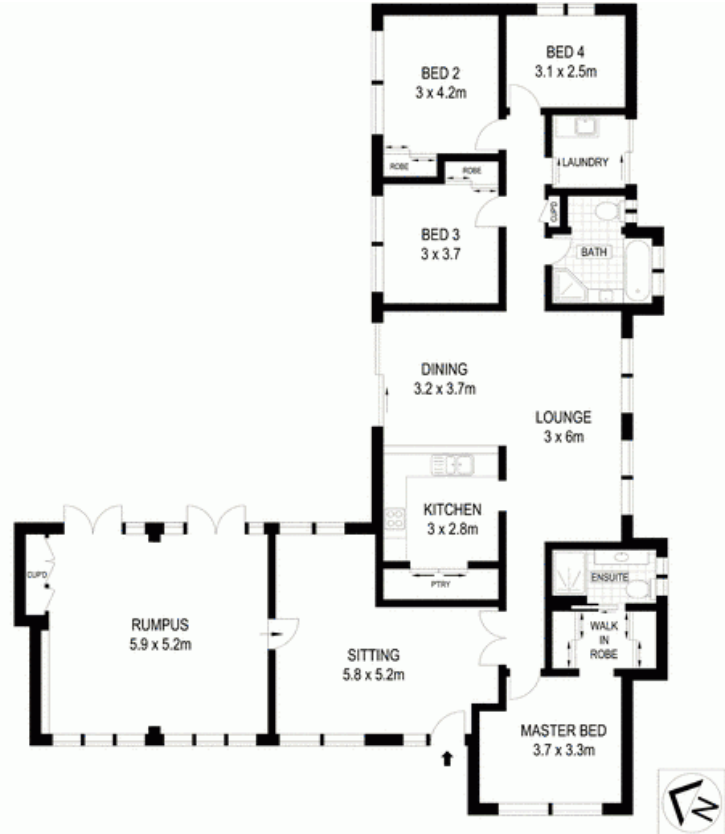
Gilbert + Younan Sales



SITE PLAN (NOT TO SCALE)

0 1 2 3 4 5

Scale in metres. Indicative only. Dimensions are approximate. All information contained herein is gathered from sources we believe to be reliable. However we cannot guarantee its accuracy and interested persons should rely on their own enquiries.



6 Molle Place, Narellan Vale

McGrath

