



12 Greenhood Crescent Denham Court, NSW

4 2 2

Contemporary 2016 built home for easycare lifestyle

Designed for a low maintenance lifestyle, this contemporary 2016 built home features a range of quality upgrades on a tidy east facing parcel. It's located within walking distance of the proposed new school in Willowdale, a stroll to dog parks and buses.

- Edgewater Home design showcases open single level layout
- Seamless indoor/outdoor flow through stacking sliding doors
- Covered terrace surrounded by level easy care lawns
- CaesarStone island kitchen featuring rangehood and gas cooktop
- Spacious bedrooms are appointed with built-in wardrobes
- Master complete with walk-in wardrobe and stone ensuite
- Stylish bathroom reveals separate bath/shower, separate w/c
- Ducted air conditioning, stainless appliances, alarm system
- Internal access to double lock-up garage, off street parking

G+Y COVID-19 Policy. We ask that you register

For more details please visit

staging.gyproperty.com.au

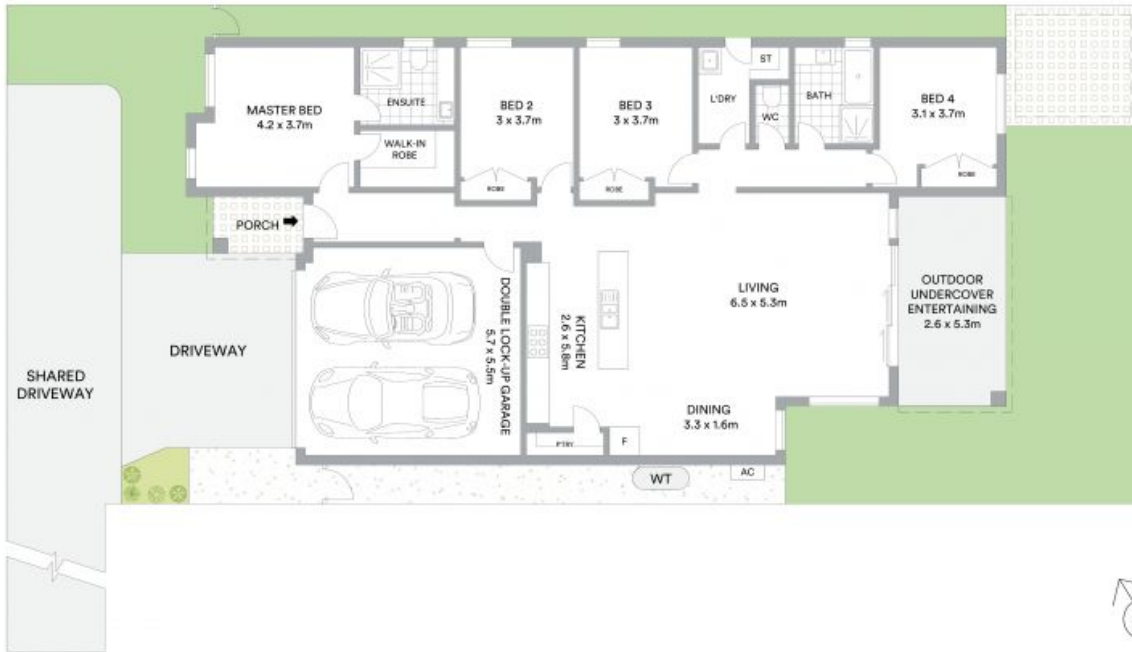
PH: 02 4648 4058 | FAX: 02 4648 4059

2/6 Somerset Avenue, NARELLAN, NSW 2567



Anna Younan

0416 053 838



Greenhood Crescent



Internal 182sqm
Land area 427sqm



Scale in metres. Indicative only. All information contained herein is obtained from sources we believe to be accurate. We cannot guarantee its accuracy. Interested persons should make and rely on their own enquiries.

