



9 Parkinson Road Spring Farm, NSW



### Family Home ideal for first home buyers, investors and downsizers

Located in the new estate of Spring Farm East Village is this spacious four bedroom home. A good size open living floor plan with quality appliances this low maintenance home is ideal for first home buyers, investors and downsizers.

- ? Four good size carpeted bedrooms, three with built-in wardrobes
- ? Superb kitchen with island benchtop with dishwasher and gas cooktop
- ? Split system air conditioning and temperature-controlled unit
- ? Large tiled living and dining areas
- ? Separate media/office or kids' playroom room
- ? Alfresco and backyard ideal for entertaining
- ? Great size remote 1.5 car garage
- ? Close proximity to parks, shops and Spring Farm Public School
- ? Only moments away from main arterial roads and Narellan Town Centre



**Anna Younan**

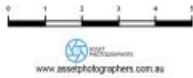
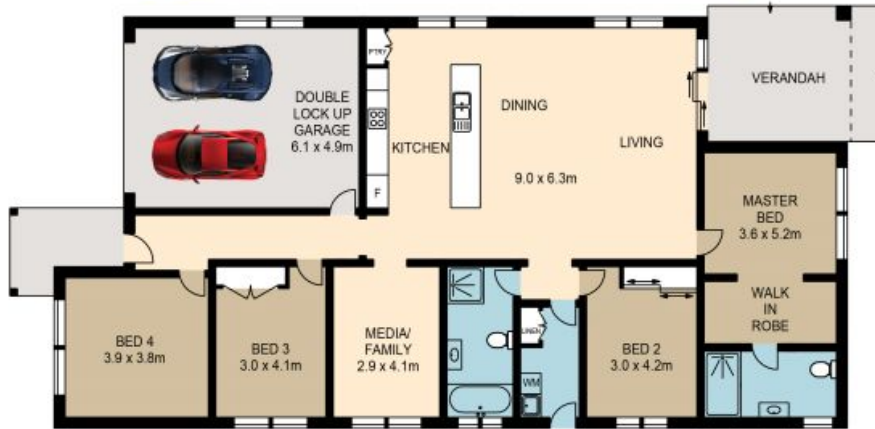
0416 053 838

For more details please visit

<https://staging.gyproperty.com.au/5947456>



9 PARKINSON ROAD, SPRING FARM



Please note these measurements are approximate only. The plans is intended as a rough guide for illustrative purpose. It is not warranted or guaranteed to be correct nor it is part of the sale or rental contract.

