



9 Parkinson Road Spring Farm, NSW



Family Home ideal for first home buyers, investors and downsizers

Located in the new estate of Spring Farm East Village is this spacious four bedroom home. A good size open living floor plan with quality appliances this low maintenance home is ideal for first home buyers, investors and downsizers.

- ? Four good size carpeted bedrooms, three with built-in wardrobes
- ? Superb kitchen with island benchtop with dishwasher and gas cooktop
- ? Split system air conditioning and temperature-controlled unit
- ? Large tiled living and dining areas
- ? Separate media/office or kids' playroom room
- ? Alfresco and backyard ideal for entertaining
- ? Great size remote 1.5 car garage
- ? Close proximity to parks, shops and Spring Farm Public School
- ? Only moments away from main arterial roads and Narellan Town Centre



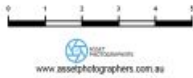
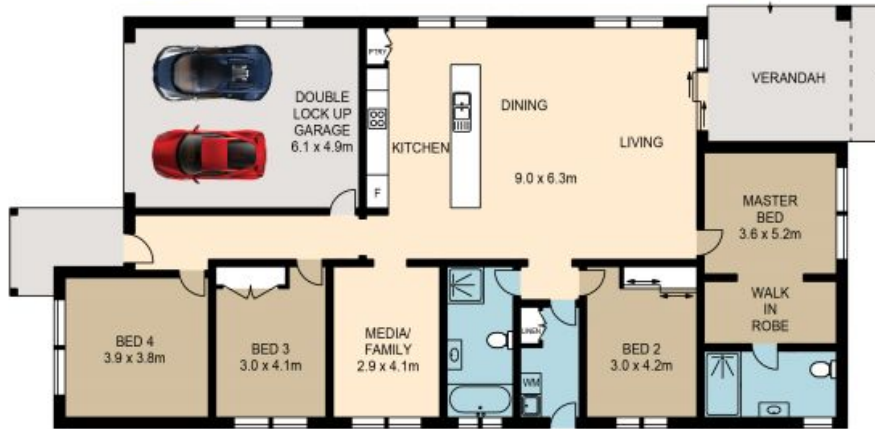
Anna Younan

0416 053 838

For more details please visit
<https://staging.gyproperty.com.au/5947456>



9 PARKINSON ROAD, SPRING FARM



Please note these measurements are approximate only. The plans is intended as a rough guide for illustrative purpose. It is not warranted or guaranteed to be correct nor it is part of the sale or rental contract.

