



27 Southdown Road Elderslie, NSW



3



1



1

Spacious, Bright and Cosy

Located in the leafy suburb of Elderslie. This single level family home is brilliantly positioned on a 703sqm parcel of land. Boasting a fantastic opportunity for first home buyers and astute investors, all while being moments from local shops and Mawarra Public School.

- Three generous bedrooms with built-in wardrobes to all
- Open plan kitchen equipped with a gas cooktop
- Large frontage with dual side access
- Cosy family room abundant with natural light
- Floating floors, gas fireplace and natural gas
- Main bathroom with separate toilet facilities
- Low maintenance backyard with two garden sheds for storage
- Split system air conditioning
- Located moments to local shops, schools and transport

For more details please visit
<https://staging.gyproperty.com.au/6351440>



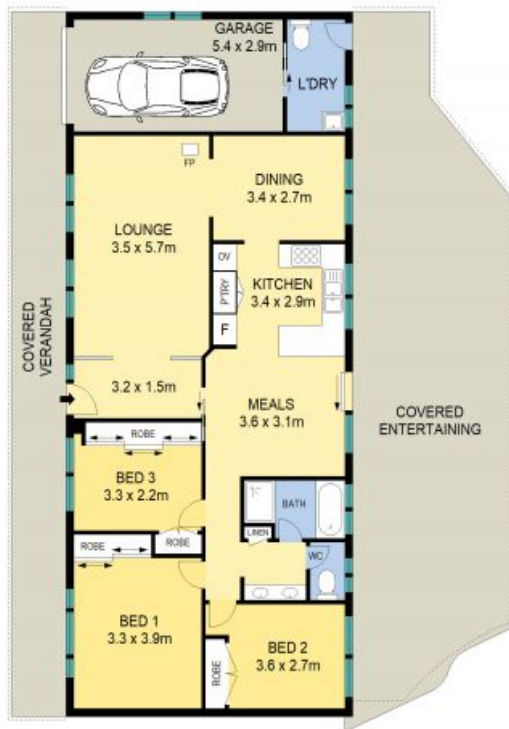
Anna Younan

0416 053 838



Anna Younan

0416 053 838



Scale in metres, indicative only. All information contained herein is obtained from sources we believe to be accurate, we cannot guarantee its accuracy, interested persons should make and rely on their own enquiries.

27 Southdown Road, Elderslie



GILBERT + YOUNAN

27 Southdown Road, Elderslie, NSW

