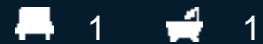




14 Cowell Lane Elderslie, NSW

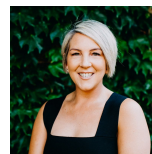


### Studio apartment with water usage included

This low maintenance studio offers minimum fuss living and all within close proximity to Camden, Narellan and bypass access. Large open plan living space, set your studio up the way you want and get creative! Kitchenette features 2 burner electric cooktop, ample storage and space for a front loader washing machine. Spacious and modern bathroom, Split system air conditioning, Timber laminated floors.

PLEASE NOTE THAT WE DO NOT ACCEPT ONE-FORM APPLICATIONS, YOU WILL BE SENT A LINK AFTER INSPECTION TO MAKE AN APPLICATION THROUGH T-APP

For more details please visit <https://staging.gyproperty.com.au/6362436>



**Tanya Gilbert**

0499 250 804